

LOUNGER



Side panel without windows Side panel with windows Connection gutter roof Connection panel side panel



17 m²

LOUNGER™ Medium

Width	Length	Height	Height opening
414 cm	414 cm	335 cm	240 cm



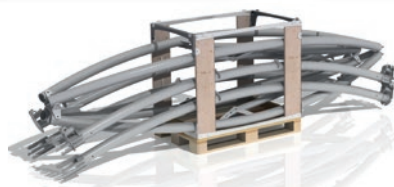
26 m²

LOUNGER™ Large

Width	Length	Height	Height opening
518 cm	518 cm	360 cm	240 cm



QUICK TO RIG BY 2 PERSONS IN 10 MINUTES



SPECIFIC PRODUCT DETAILS

	LOUNGER M		LOUNGER L	
	(L) x (W) x (H) cm	Kilo	(L) x (W) x (H) cm	Kilo
Dimensions and weight structure (excl cover)	342 x 80 x 80 cm	112 Kilo	390 x 80 x 80 cm	135 Kilo
Dimensions and weight cover in Airtex	60 x 70 x 10 cm	8,6 Kilo	80 x 50 x 10 cm	12,6 Kilo
Dimensions and weight side panel without windows in Airtex	54 x 40 x 10 cm	6,2 Kilo	60 x 40 x 10 cm	7 Kilo
Dimensions and weight side panel with windows in Airtex	50 x 40 x 10 cm	7,4 Kilo	70 x 40 x 10 cm	9,5 Kilo
Dimensions and weight connection gutter in Airtex	30 x 30 x 10 cm	1,6 Kilo	40 x 25 x 10 cm	3 Kilo
Dimensions and weight connection panel in Airtex	30 x 20 x 5 cm	0,6 Kilo	30 x 20 x 5 cm	0,7 Kilo
Dimensions and weight ground pin	80 x 2,5 ø cm	5 Kilo	80 x 2,5 ø cm	5 Kilo
Dimensions and weight ballast plate	49 x 49 x 1 cm	5 Kilo	49 x 49 x 1 cm	5 Kilo
Dimensions and weight Lounger transport box	120 x 80 x 110 cm	52 Kilo	120 x 80 x 110 cm	52 Kilo

MATERIALS

Structure	6082T6 Alloy
Couplings	Galvanized steel
Cables	Stainless steel 316

Cover, side panels and connection

Mehler Airtex® magic	350 grams/m ^{2*}
California T19 M2/B1 certification	
Cold resistance	-20 °C
High temperature	+70 °C
Translucence	>6 Note, Value
<i>Contours and corners are made of PVC</i>	
<i>*Other materials on request</i>	

OTHER MATERIALS

Mehler Frontlit White	540 grams/m ²
Mehler Airtex Black	350 grams/m ²
Mehler Blockout PVC	650 grams/m ²
Ferrari Stam 6002**	630 grams/m ²

**Range of colours available on request

ANCHORING REQUIREMENTS PER PEAK WIND VELOCITY

	Max peak velocity according to European standards (km/u)	Max peak velocity according to European standards (m/s)	Max peak velocity according to European standards (knots)	Required ballast according to European standards (kg)
Lounger M	78,8	21,9	42,5	425
Lounger L	78,8	21,9	42,5	500

Numbers and weight per feet

BALLAST PER PEAK WIND VELOCITY

	Ballast 100 km/u (kg)	Ballast 90 km/u (kg)	Ballast 80 km/u (kg)	Ballast 70 km/u (kg)	Ballast 60 km/u (kg)	Ballast 50 km/u (kg)	Ballast 40 km/u (kg)	Ballast 30 km/u (kg)
Lounger M	684	554	438	335	246	171	110	62
Lounger L	805	652	515	395	290	201	129	72

Numbers and weight per feet

ANCHOR PINS

Lounger M	1x	25 x 1.000 mm
Lounger L	1x	25 x 1.000 mm

Numbers and weight per feet

Based on:

Peak wind velocity, measured on the highest point of the structure!
All side panels closed!
Ballast system used!



Sold in Switzerland by **TentSO S.A.**
Avenue Reverdil 4, 1260 Nyon, Switzerland
T: +41 22 990 00 90 Email: sales@tentso.com